

TF Metric Series

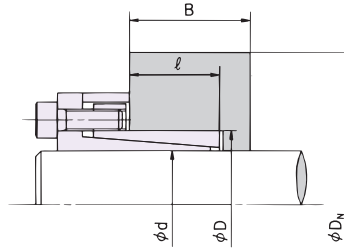
Installing to hubs with a guide portion

when $l \leq B < 2l$
(See Installation Example C)

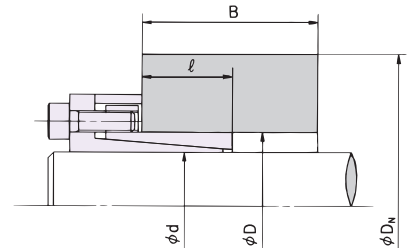
Installing to hubs without a guide portion

when $l \leq B < 2l$
(See Installation Example D)

D_N is the minimum hub diameter required to tolerate P' or the pressure exerted from within the hub.



Installation Example C
When installing to hubs with a guide portion, the hub configuration coefficient is as follows: $K_3=1.0$



Installation Example D
When installing to hubs without a guide portion, the hub configuration coefficient is as follows: $K_3=1.0$

<EXAMPLE> Hub Material Yield Point = 35500 psi
PL030X041TF = 2.329" min. hub diameter

Min. Hub Dia. (D_N in inches)

Model Number	Hub Contact Pressure P' (psi)	Yield Point and Material examples									
		147 Mpa 21300 psi	176 Mpa 25500 psi	206 Mpa 29900 psi	225 Mpa 32600 psi	245 Mpa 35500 psi	274 Mpa 39700 psi	294 Mpa 42600 psi	343 Mpa 49700 psi	392 Mpa 56900 psi	441 Mpa 64000 psi
				1010 304SS 316SS	1015 1118	1020	1030	1035 1040 1144	1045	1055	
PL006X012 TF	13489	0.996	0.851	0.769	0.733	0.705	0.673	0.656	0.624	0.602	0.585
PL007X012 TF	13489	0.996	0.851	0.769	0.733	0.705	0.673	0.656	0.624	0.602	0.585
PL008X015 TF	15519	1.488	1.196	1.050	0.991	0.943	0.892	0.865	0.815	0.781	0.756
PL010X018 TF	14794	1.667	1.374	1.220	1.155	1.104	1.048	1.018	0.963	0.925	0.897
PL011X018 TF	14794	1.667	1.374	1.220	1.155	1.104	1.048	1.018	0.963	0.925	0.897
PL012X020 TF	13344	1.641	1.406	1.273	1.216	1.169	1.117	1.088	1.037	1.000	0.973
PL014X022 TF	12038	1.642	1.445	1.328	1.276	1.232	1.184	1.158	1.109	1.074	1.048
PLX15X023 TF	18855	3.655	2.335	1.904	1.750	1.635	1.517	1.456	1.349	1.278	1.227
PL016X024 TF	18130	3.322	2.295	1.910	1.768	1.659	1.546	1.488	1.384	1.315	1.265
PL018X026 TF	18275	3.691	2.516	2.085	1.927	1.807	1.683	1.618	1.505	1.428	1.373
PL019X027 TF	17695	3.487	2.497	2.101	1.951	1.836	1.716	1.653	1.542	1.467	1.412
PL020X028 TF	17115	3.332	2.482	2.115	1.974	1.864	1.747	1.687	1.578	1.504	1.450
PL022X032 TF	10733	2.192	1.972	1.835	1.773	1.721	1.662	1.629	1.569	1.525	1.492
PL024X034 TF	10153	2.247	2.039	1.907	1.847	1.796	1.738	1.706	1.646	1.603	1.571
PL025X034 TF	10153	2.247	2.039	1.907	1.847	1.796	1.738	1.706	1.646	1.603	1.571
PL028X039 TF	13199	3.165	2.721	2.468	2.358	2.268	2.168	2.115	2.015	1.945	1.893
PL030X041 TF	12473	3.155	2.754	2.518	2.414	2.329	2.234	2.182	2.086	2.017	1.967
PL032X043 TF	11893	3.178	2.805	2.580	2.480	2.398	2.305	2.255	2.160	2.093	2.043
PL035X047 TF	11313	3.341	2.979	2.756	2.657	2.573	2.480	2.428	2.332	2.264	2.213
PL038X050 TF	10733	3.425	3.082	2.867	2.770	2.689	2.597	2.546	2.451	2.383	2.332
PL040X053 TF	10153	3.503	3.179	2.973	2.879	2.799	2.710	2.660	2.566	2.499	2.449
PL042X055 TF	9863	3.572	3.255	3.051	2.958	2.879	2.790	2.740	2.647	2.580	2.529
PL045X059 TF	11893	4.360	3.848	3.540	3.403	3.290	3.163	3.093	2.964	2.872	2.804
PL048X062 TF	11313	4.408	3.930	3.636	3.504	3.395	3.271	3.203	3.077	2.986	2.919
PL050X065 TF	10733	4.453	4.006	3.727	3.601	3.495	3.376	3.310	3.186	3.098	3.031
PL055X071 TF	9138	4.420	4.065	3.834	3.727	3.636	3.533	3.475	3.366	3.287	3.228
PL060X077 TF	8412	4.601	4.269	4.049	3.946	3.859	3.758	3.702	3.596	3.519	3.460
PL065X084 TF	7687	4.824	4.512	4.303	4.204	4.120	4.023	3.968	3.865	3.789	3.732
PL070X090 TF	9718	5.795	5.291	4.966	4.817	4.691	4.548	4.468	4.319	4.211	4.130
PL075X095 TF	9138	5.914	5.439	5.130	4.987	4.866	4.727	4.650	4.504	4.398	4.319
PL080X100 TF	11458	7.177	6.383	5.898	5.681	5.500	5.297	5.186	4.978	4.830	4.719
PL085X106 TF	10878	7.328	6.579	6.112	5.902	5.726	5.527	5.417	5.212	5.065	4.955
PL090X112 TF	10443	7.535	6.809	6.351	6.144	5.969	5.771	5.662	5.457	5.310	5.199